

Acest plan anulează și înlocuiește planul nr. PT.03.03.28.IE.07.006 elaborat la data 01.2013.
This layout plan canceled and replaced layout plan no. PT.03.03.28.IE.07.006 prepared on 01.2013.

VERIFICATOR PROIECTE
ROMANIA
NR. 1756
855 / 24.06.13

Verificator / Expert
Semnătura
Referat / Expertiză
Report / Expertise

European Investment Bank

MINISTERUL TRANSPORTURILOR

BENEFICIAR / BENEFICIARY :
CFR
COMPANIA NAȚIONALĂ DE CĂI FERATE "CFR" SA

Semnătura
Referat / Expertiză
Report / Expertise

PROIECTANT / DESIGNER:
PÖYRY

Șef de echipă
Team leader
Expert Cheie
Key Expert
Subcontractant / Subcontractor

C. Teodorescu
D.A. Stănescu

A.M. Baicu
M. Ciocirlian

01.2013
01.2013
01.2013

Semnătura
Signature

Proiect 91
35311.1

Faza / Phase:
PTh+CS / TD+TS

Reabilitarea liniei c.f. Frontieră - Simeria, parte componentă a coridorului IV
Pan - European pentru circulația trenurilor cu viteză maximă de 160 km/h
Tronsoanel 3: Gurasada - Simeria

Rehabilitation of the Railway Line Border - Curtici - Simeria, component Part of the IV
Pan - European Corridor for the Trains Circulation with maximum speed of 160 km/h
Section 3: Gurasada - Simeria

Denumire desen / Drawing name:
Prize plan etaj 2 - Hală mentenanță Simeria
Simeria Maintenance hall - Socket plan for second floor

Scara / Scale
1:100

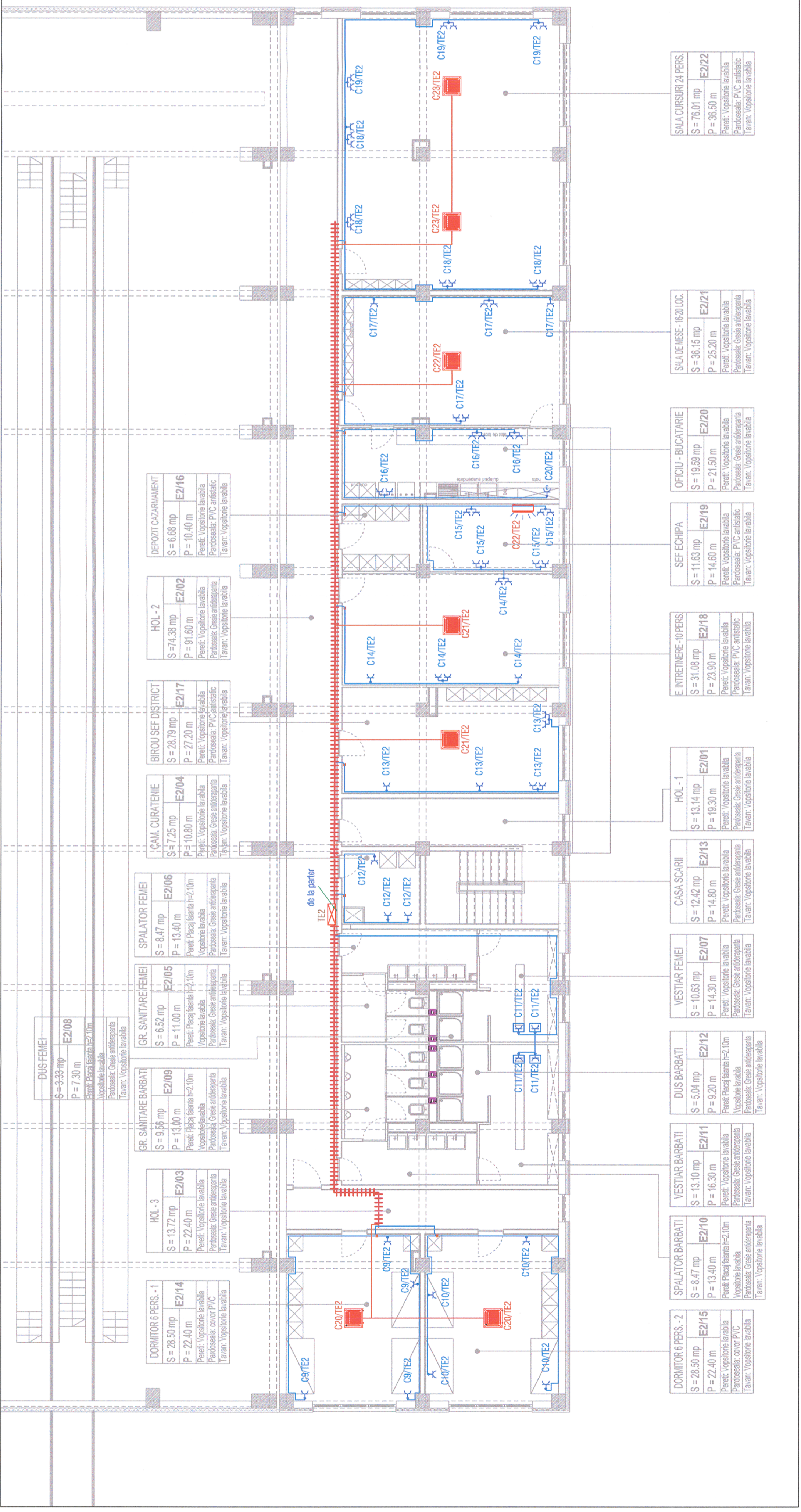
Revizia / Revision
1/05.2013

Cod desen / Drawing Code
PT.03.03.28.IE.07.007

Nr / No
07/27

LEGENDA / LEGEND:

- Priză monofazată simplă 16A/230Vc.a., montată îngropat;
- Single phase socket 16A/230V a.c. buried;
- Priză monofazată dubla 16A/230Vc.a., montată îngropat;
- Double socket, single phase 16A/230V a.c. buried;
- Priza electrica monofazata, simpla, 230V/16Ac.a., IP 65
- Single phase socket 230V/16A, IP 65
- Unitate interioara tip caseta de plafon
- interior unit, ceiling mounted
- Unitate interioara de perete
- Interior unit, wall mounted
- Circuit prize
- Sockets circuit
- Circuit unitati AC
- AC units circuit
- Jgheab metalic
- Metallic tray



DUS FEMEI	S = 3,33 mp P = 7,30 m	E2/08
GR. SANITARE FEMEI	S = 6,52 mp P = 11,00 m	E2/05
GR. SANITARE BARBATI	S = 9,56 mp P = 13,00 m	E2/09
HOL - 3	S = 13,72 mp P = 22,40 m	E2/03
DORMITOR 6 PERS. - 1	S = 28,50 mp P = 22,40 m	E2/14
HOL - 2	S = 74,38 mp P = 91,60 m	E2/02
BIROU SEF DISTRICT	S = 28,79 mp P = 27,20 m	E2/17
CAM. CURATENIE	S = 7,25 mp P = 10,80 m	E2/04
DEPOZIT CAZARMAMENT	S = 6,68 mp P = 10,40 m	E2/16
SPALATOR FEMEI	S = 8,47 mp P = 13,40 m	E2/06
SPALATOR BARBATI	S = 8,47 mp P = 13,40 m	E2/10
VESTIAR FEMEI	S = 10,63 mp P = 14,30 m	E2/07
VESTIAR BARBATI	S = 13,10 mp P = 16,30 m	E2/11
DUS BARBATI	S = 5,04 mp P = 9,20 m	E2/12
OFICIU - BUCATARIE	S = 19,89 mp P = 21,50 m	E2/20
SALA CURSURI 24 PERS.	S = 76,01 mp P = 36,50 m	E2/22
SALA DE MESE - 16-20 LOC.	S = 36,15 mp P = 25,20 m	E2/21
SEF ECHEIPA	S = 11,63 mp P = 14,60 m	E2/19
E INTRETINERE - 10 PERS.	S = 31,08 mp P = 23,90 m	E2/18
HOL - 1	S = 13,14 mp P = 19,30 m	E2/01
CASA SCARII	S = 12,42 mp P = 14,80 m	E2/13
DUS FEMEI	S = 10,63 mp P = 14,30 m	E2/07
DUS BARBATI	S = 5,04 mp P = 9,20 m	E2/12
VESTIAR BARBATI	S = 13,10 mp P = 16,30 m	E2/11
SPALATOR BARBATI	S = 8,47 mp P = 13,40 m	E2/10
DORMITOR 6 PERS. - 2	S = 28,50 mp P = 22,40 m	E2/15

DEPOZIT CAZARMAMENT	S = 6,68 mp P = 10,40 m	E2/16
HOL - 2	S = 74,38 mp P = 91,60 m	E2/02
BIROU SEF DISTRICT	S = 28,79 mp P = 27,20 m	E2/17
CAM. CURATENIE	S = 7,25 mp P = 10,80 m	E2/04
SPALATOR FEMEI	S = 8,47 mp P = 13,40 m	E2/06
GR. SANITARE FEMEI	S = 6,52 mp P = 11,00 m	E2/05
GR. SANITARE BARBATI	S = 9,56 mp P = 13,00 m	E2/09
HOL - 3	S = 13,72 mp P = 22,40 m	E2/03
DORMITOR 6 PERS. - 1	S = 28,50 mp P = 22,40 m	E2/14
DEPOZIT CAZARMAMENT	S = 6,68 mp P = 10,40 m	E2/16
HOL - 2	S = 74,38 mp P = 91,60 m	E2/02
BIROU SEF DISTRICT	S = 28,79 mp P = 27,20 m	E2/17
CAM. CURATENIE	S = 7,25 mp P = 10,80 m	E2/04
SPALATOR FEMEI	S = 8,47 mp P = 13,40 m	E2/06
GR. SANITARE FEMEI	S = 6,52 mp P = 11,00 m	E2/05
GR. SANITARE BARBATI	S = 9,56 mp P = 13,00 m	E2/09
HOL - 3	S = 13,72 mp P = 22,40 m	E2/03
DORMITOR 6 PERS. - 1	S = 28,50 mp P = 22,40 m	E2/14

DEPOZIT CAZARMAMENT	S = 6,68 mp P = 10,40 m	E2/16
HOL - 2	S = 74,38 mp P = 91,60 m	E2/02
BIROU SEF DISTRICT	S = 28,79 mp P = 27,20 m	E2/17
CAM. CURATENIE	S = 7,25 mp P = 10,80 m	E2/04
SPALATOR FEMEI	S = 8,47 mp P = 13,40 m	E2/06
GR. SANITARE FEMEI	S = 6,52 mp P = 11,00 m	E2/05
GR. SANITARE BARBATI	S = 9,56 mp P = 13,00 m	E2/09
HOL - 3	S = 13,72 mp P = 22,40 m	E2/03
DORMITOR 6 PERS. - 1	S = 28,50 mp P = 22,40 m	E2/14
HOL - 2	S = 74,38 mp P = 91,60 m	E2/02
BIROU SEF DISTRICT	S = 28,79 mp P = 27,20 m	E2/17
CAM. CURATENIE	S = 7,25 mp P = 10,80 m	E2/04
SPALATOR FEMEI	S = 8,47 mp P = 13,40 m	E2/06
GR. SANITARE FEMEI	S = 6,52 mp P = 11,00 m	E2/05
GR. SANITARE BARBATI	S = 9,56 mp P = 13,00 m	E2/09
HOL - 3	S = 13,72 mp P = 22,40 m	E2/03
DORMITOR 6 PERS. - 1	S = 28,50 mp P = 22,40 m	E2/14
OFICIU - BUCATARIE	S = 19,89 mp P = 21,50 m	E2/20
SALA CURSURI 24 PERS.	S = 76,01 mp P = 36,50 m	E2/22
SALA DE MESE - 16-20 LOC.	S = 36,15 mp P = 25,20 m	E2/21
SEF ECHEIPA	S = 11,63 mp P = 14,60 m	E2/19
E INTRETINERE - 10 PERS.	S = 31,08 mp P = 23,90 m	E2/18
HOL - 1	S = 13,14 mp P = 19,30 m	E2/01
CASA SCARII	S = 12,42 mp P = 14,80 m	E2/13
DUS FEMEI	S = 10,63 mp P = 14,30 m	E2/07
DUS BARBATI	S = 5,04 mp P = 9,20 m	E2/12
VESTIAR BARBATI	S = 13,10 mp P = 16,30 m	E2/11
SPALATOR BARBATI	S = 8,47 mp P = 13,40 m	E2/10
DORMITOR 6 PERS. - 2	S = 28,50 mp P = 22,40 m	E2/15